



# INDUSTRIA

L I N E A R   H I G H - B A Y

**CREE**  **LIGHTING**







# INDUSTRIA

## ONE LUMINAIRE DIVERSE APPLICATIONS

INDUSTRIA is an all-new modular LED High-Bay system built for today's industrial environments.

The family responds to market demands with great attention: It comes in 3 sizes, 6 lumen packages, 4 light distributions, multiple colour temperatures and mounting kits making it suitable for thousands of possible configurations that can satisfy even the most demanding project requirements.



HIGH RACK OPTIC

UP TO 70°C

GLASS-FREE

CRI 90

IK08



# INDUSTRIA

## A MODULAR TOOL KIT

With 2000+ possible configurations, INDUSTRIA 's modular design offers a toolkit of optics, mounting options, outputs and sizes for the industrial market and its diverse requirements.



Installation

Wire Suspension

Eye Bolt for Chain Suspension

BusBar Bracket

Wall and Surface Adjustable Bracket

LED Colour temperature

4000K  
CRI80/90  
Neutral White

5000K  
CRI80/90  
Cool White

Dimensions

Industria 2  
417 l x 350 w x 75 h

Industria 4  
656 l x 350 w x 75 h

Industria 6  
976 l x 350 w x 75 h

Lumen Output

Small  
15L/20L

Medium  
29L/34L

Large  
44L/51L

Light Distribution

HIGH RACK

NARROW BEAM 55°

MEDIUM BEAM 75°

MEDIUM BEAM 90°

Optional Dust Cover

Equipped with the dust cover, INDUSTRIA becomes an ideal solution for food production plants and commercial environment installations

Colour

Body:  
Silver

End Caps:  
Sapphire Grey

CREE LIGHTING

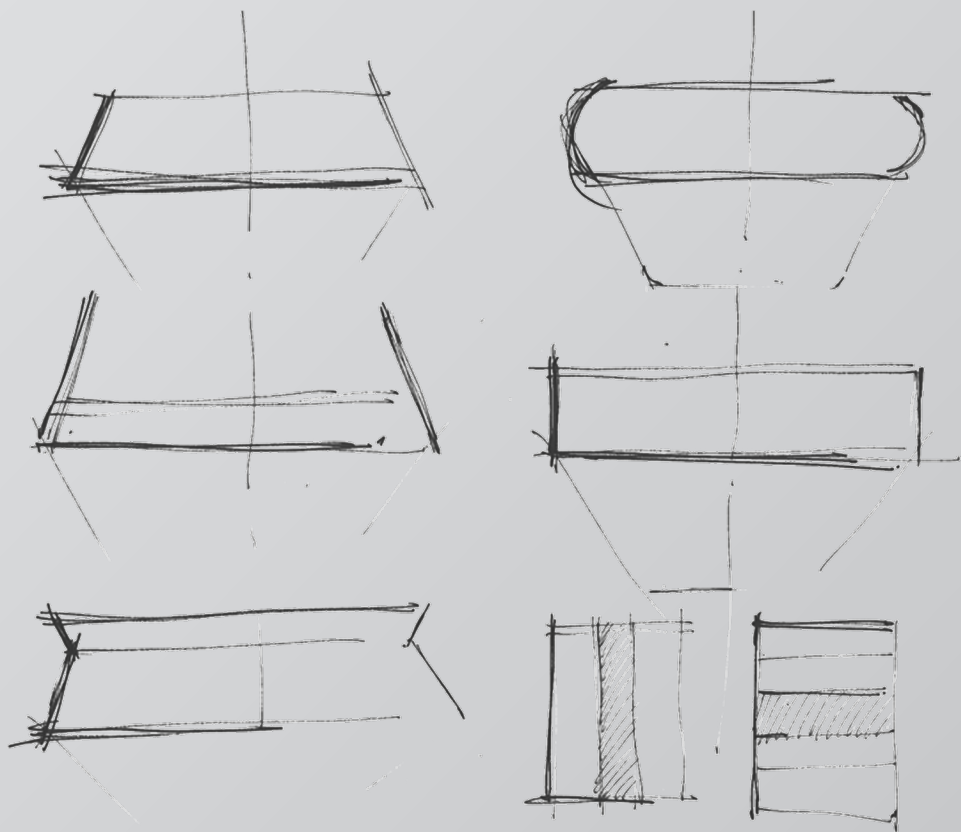
SUSTAINABILITY  
THROUGH  
MODULARITY

UPGRADE  
REPLACE  
RECYCLE

CREE LIGHTING

# LIGHTING FOR INDUSTRY

Characterized by its innovative yet minimal aesthetic qualities, INDUSTRIA stands out for its essential overall design providing class-leading performance in terms of energy efficacy and optics.



**F Mark**  
before we solve we listen

## Designed by F Mark

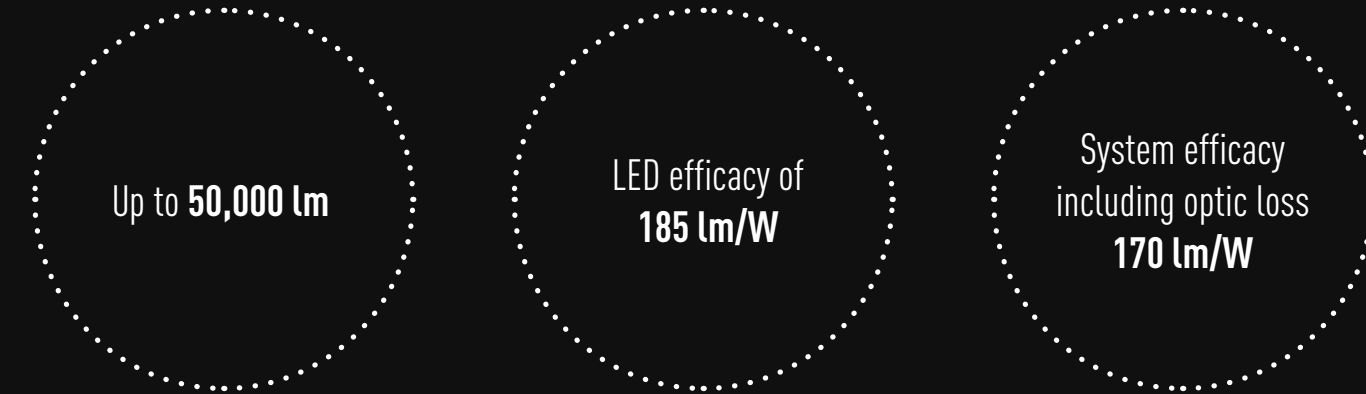
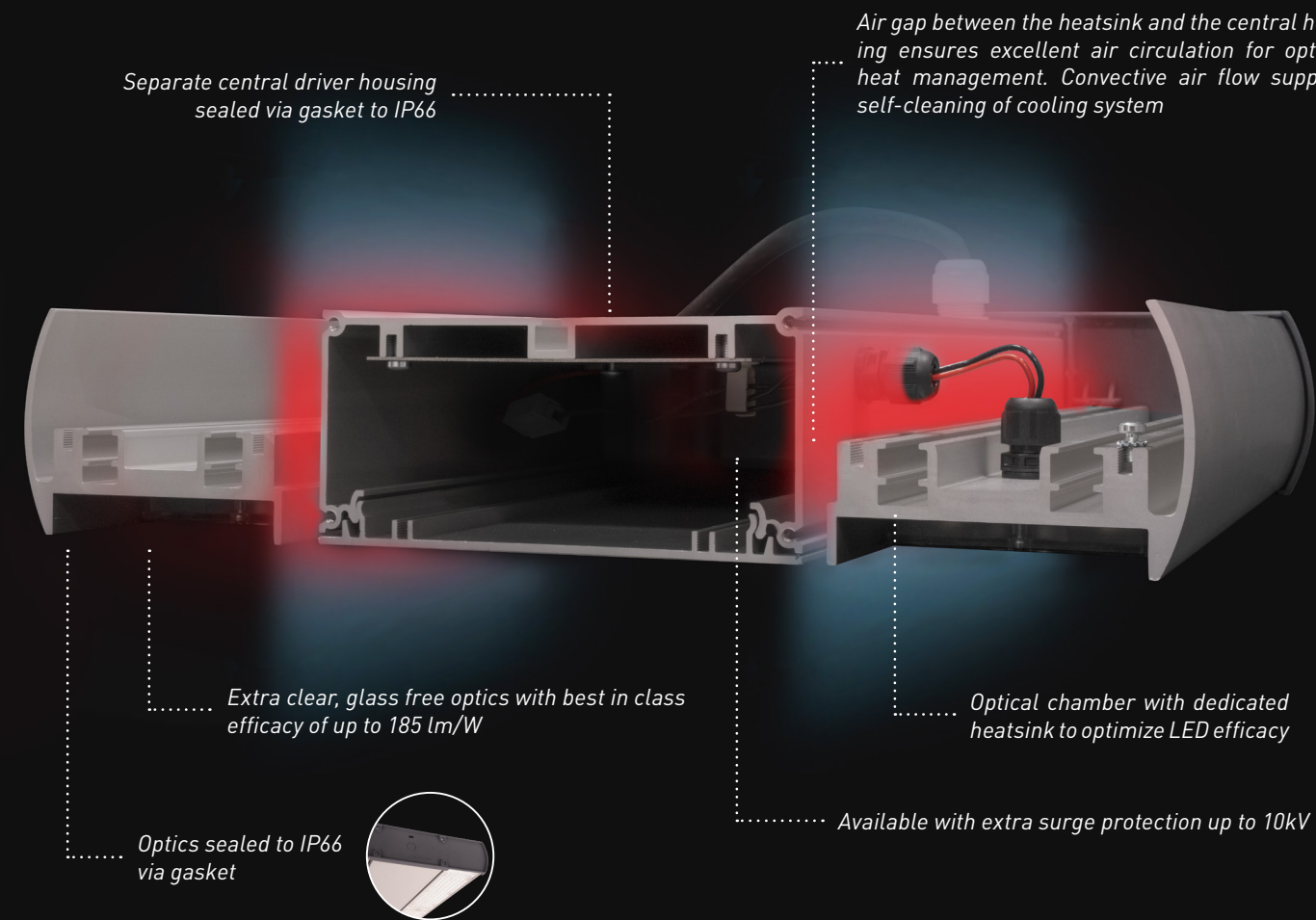
Developed in cooperation with London based product design agency F Mark, INDUSTRIA offers a high level of aesthetics whilst providing market leading performance.

## FORM



# FUNCTION

INDUSTRIA features a separate IP66 sealed driver and optical chamber, enabling airflow between components. This allows for market leading performance in lumen output and efficacy.





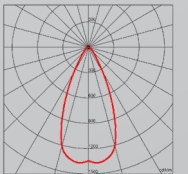
# SMARTNESS FOR INDUSTRY

The INDUSTRIA product family is not only good looking, but smart, too. Smart sensors and emergency modules are easily configured with the luminaire, providing turnkey smart solutions for industry, warehousing, retail and many more applications.



## EMERGENCY KIT

- IP66 emergency kit option
- Integrated or stand alone.
- 200 lm output
- 3 h emergency operation



## SMARTEST SENSOR ON THE MARKET

- Continuous dimming feature
- Easy commissioning with Bluetooth Sensor Configuration App
- Recommended mounting height up to 12 m
- Motion detection within a 30 m diameter range at a mounting height of 12 m



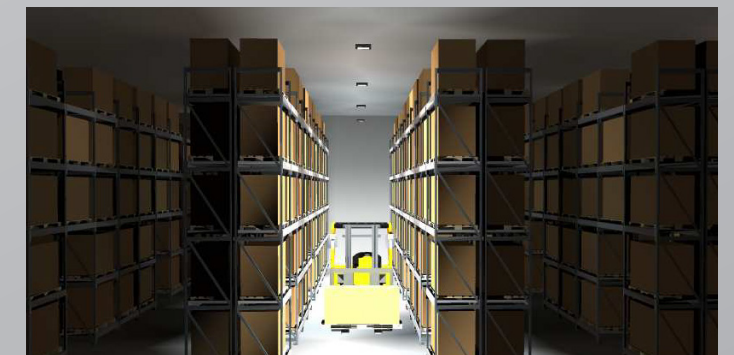
Additional 70%  
energy saving potential

No system  
commissioning fee

Ideal for  
retrofit solutions

## PROJECT SUMMARY

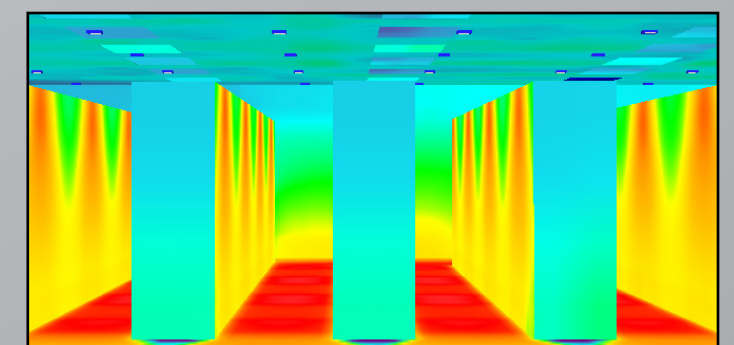
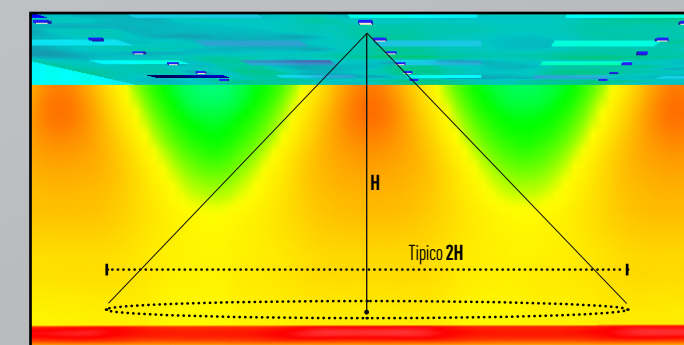
|                         |                                |
|-------------------------|--------------------------------|
| LUMINAIRE:              | INDA - HR - 15L - 508          |
| LUMAIRES PER CORRIDOR:  | 4                              |
| INDIVIDUAL SYSTEM WATT: | 84 W                           |
| TOTAL SYSTEM WATT:      | 336 W                          |
| MOUNTING HEIGHT:        | 8,5 m                          |
| LUMINAIRE SPACING:      | 9,2 m                          |
| ILLUMINANCE LEVELS:     | 200 lux (floor) 75 lux (shelf) |



## HIGH RACK OPTIC

9,2 M SPACING BETWEEN LUMAIRES  
REDUCTION OF LUMINAIRE COUNT BY 50%  
SYSTEM ENERGY SAVING OF 50%  
IMPROVED VISUAL COMFORT | UGR <22

\*Please note that for this specific case study, INDUSTRIA's performance has been compared to industrial LED floodlights and not HID luminaires.



20

50

200



# PRODUCT SUMMARY

## FEATURES

- LED Lumen output: 15050-52670lm
- LED module efficiency: ≥185 lm/W
- Luminaire efficiency: up to 170 lm/W
- MacAdam Step: : ≤ 3-Step
- CCT:4000K, 5000K Ra80 (Ra90 on request)
- Input Voltage: 220-240V
- Overvoltage protection: 6kV CM / DM
- Operative temperature: -40°C up to +50°C
- Available with High Temperature configurations for Ta ≥ 70°C
- Insulation class: Class I
- Degree of Protection: IP66\IK08
- Control options: DALI 2.0 ,Full Programmable Ambient/Motion Sensor
- UGR max value: ≤ 22 per lens 75, 55 & HR, ≤ 25 per lens 90
- Expected Lifetime (Ta=50°C): L90B10 > 60.000 hours
- Expected Lifetime (Ta=50°C): L80B10 > 122.000 hrs
- Stand-alone emergency light unit IP65 200 lm (3 hours) available as accessory

## CONSTRUCTION AND MATERIALS

- Extruded Anodized aluminium with die-cast Aluminium end caps
- Glass-free optical system
- Ultra-clear Replaceable high efficacy lens
- Replaceable LED board equipped with ESD protection
- Mounting Option: Eye Bolt, Wire Suspension, Busbar, Adjustable Bracket (surface and wall)
- Dust covers available as accessory
- Cable type H07RN-F (standard Cable length 2 m)
- Easy installation
- Practicality in ordinary and extraordinary maintenance
- Luminaire is, completely disassembled and recyclable
- Suitable for food industry applications

## WARRANTY AND CERTIFICATIONS

- Limited Warranty: 5 years
- CE / RoHs / RCM / CB / D / ENEC / Ball Impact
- Risk group exempt
- Compliant to: EN 60598-1; EN 60598-2-1
- Energy labels are available for download in the certifications section of the product page

# ORDERING INFORMATION

### Ordering information

EX: INDА-N-55-15L-408-+-A-SG-FX-S-S-02 + IND-EY

| INDА                                 | - N              | - 55                      | - 15L         | - 408              | - +              | - A           | - SG   | - FX               | - S                                  | - S            | - 02                 |
|--------------------------------------|------------------|---------------------------|---------------|--------------------|------------------|---------------|--------|--------------------|--------------------------------------|----------------|----------------------|
| Product                              | Mounting Options | Optic                     | Lumen Package | CCT                | Insulation Class | Voltage       | Finish | Option             | Variant                              | Protection     | Cable length         |
| INDА<br>INDUSTRIA<br>Linear High Bay | N*<br>NO MOUNT   | 55<br>NARROW BEAM<br>55D  | 15L<br>SMALL  | 308**<br>30K 80CRI | +<br>Class 1     | A<br>220-240V | SG     | FX<br>FIXED OUTPUT | S<br>NO SENSOR                       | S<br>BY DRIVER | 02<br>Exit cable 2 m |
|                                      |                  | 75<br>MEDIUM BEAM<br>75D  | 20L<br>SMALL  | 408<br>40K 80CRI   |                  |               |        |                    | M***<br>MOTION/<br>AMBIENT<br>SENSOR | U<br>10 kV     |                      |
|                                      |                  | 90<br>WIDE BEAM 90D       | 29L<br>MEDIUM | 409**<br>40K 90CRI |                  |               |        |                    |                                      |                |                      |
|                                      |                  | HR<br>HIGH RACK<br>30X70D | 34L<br>MEDIUM | 508<br>50K 80CRI   |                  |               |        |                    |                                      |                |                      |
|                                      |                  |                           | 44L<br>LARGE  | 509**<br>50K 90CRI |                  |               |        |                    |                                      |                |                      |
|                                      |                  |                           | 51L<br>LARGE  |                    |                  |               |        |                    |                                      |                |                      |

\*To be selected from those available in the table MOUNTING OPTIONS  
\*\* On request  
\*\*\*Must be ordered with DL option

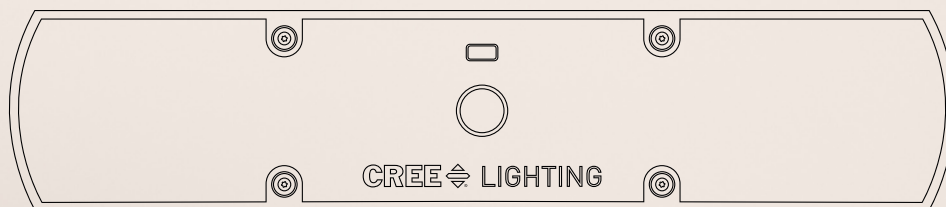
| MOUNTING OPTIONS                    |        |
|-------------------------------------|--------|
| Standard Mounting (2 pieces)        | IND-EY |
| Busbar*                             | IND-BB |
| Wire Suspension*                    | IND-SP |
| Wall and Surface Adjustable Bracket | IND-WB |

| ACCESSORIES        |          |
|--------------------|----------|
| Dust Cover 15L-20L | IND-DC-S |
| Dust Cover 29L-34L | IND-DC-M |
| Dust Cover 44L-51L | IND-DC-L |
| Safety Rope 1,5 m  | IND-SR   |

| EMERGENCY KIT                                |           |
|--|-----------|
| Emergency kit - 200 lm 3 hrs                 | IND-EM    |
| Emergency Mounting Bracket Kit for INDUSTRIA | IND-EM-BR |

\*To be ordered together to complete assembly





# INDUSTRIA

L I N E A R   H I G H - B A Y

**CREE**  **LIGHTING**

© 2022 Cree Lighting Europe S.p.A. All rights reserved.  
For informational purposes only. Content is subject to change. Patents : [www.creelighting.com/patents](http://www.creelighting.com/patents)  
Cree® and the Cree Lighting® logo are registered trademarks and the Cree SmartCast Technology® Logo is a trademark of Cree, Inc.